



wwPDB X-ray Structure Validation Summary Report ⓘ

Feb 1, 2016 – 02:49 AM GMT

PDB ID : 2IWW
Title : STRUCTURE OF THE MONOMERIC OUTER MEMBRANE PORIN
OMPG IN THE OPEN AND CLOSED CONFORMATION
Authors : Yildiz, O.; Vinothkumar, K.R.; Goswami, P.; Kuehlbrandt, W.
Deposited on : 2006-07-05
Resolution : 2.70 Å(reported)

This is a wwPDB X-ray Structure Validation Summary Report for a publicly released PDB entry.
We welcome your comments at validation@mail.wwpdb.org
A user guide is available at
<http://wwpdb.org/validation/2016/XrayValidationReportHelp>
with specific help available everywhere you see the ⓘ symbol.

The following versions of software and data (see [references ⓘ](#)) were used in the production of this report:

MolProbity : 4.02b-467
Mogul : 1.7 (RC4), CSD as536be (2015)
Xtriage (Phenix) : **NOT EXECUTED**
EDS : **NOT EXECUTED**
Percentile statistics : 20151230.v01 (using entries in the PDB archive December 30th 2015)
Ideal geometry (proteins) : Engh & Huber (2001)
Ideal geometry (DNA, RNA) : Parkinson et al. (1996)
Validation Pipeline (wwPDB-VP) : trunk26865

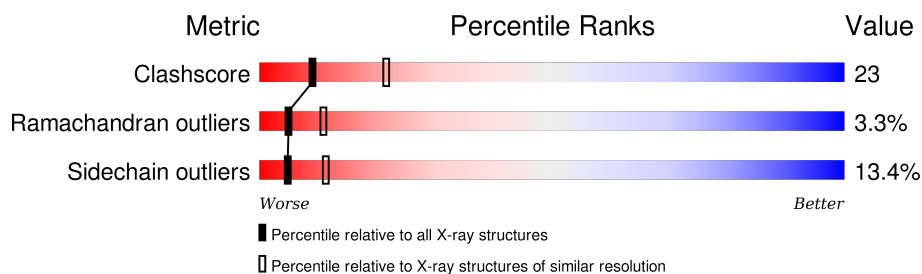
1 Overall quality at a glance

The following experimental techniques were used to determine the structure:

X-RAY DIFFRACTION

The reported resolution of this entry is 2.70 Å.

Percentile scores (ranging between 0-100) for global validation metrics of the entry are shown in the following graphic. The table shows the number of entries on which the scores are based.



Metric	Whole archive (#Entries)	Similar resolution (#Entries, resolution range(Å))
Clashscore	102246	2422 (2.70-2.70)
Ramachandran outliers	100387	2382 (2.70-2.70)
Sidechain outliers	100360	2382 (2.70-2.70)

The table below summarises the geometric issues observed across the polymeric chains and their fit to the electron density. The red, orange, yellow and green segments on the lower bar indicate the fraction of residues that contain outliers for ≥ 3 , 2, 1 and 0 types of geometric quality criteria. A grey segment represents the fraction of residues that are not modelled. The numeric value for each fraction is indicated below the corresponding segment, with a dot representing fractions $\leq 5\%$. The upper red bar (where present) indicates the fraction of residues that have poor fit to the electron density. The numeric value is given above the bar.

Note EDS was not executed.

Mol	Chain	Length	Quality of chain
1	A	281	 57% 34% 7% ..
1	B	281	 57% 34% 7% .

2 Entry composition [i](#)

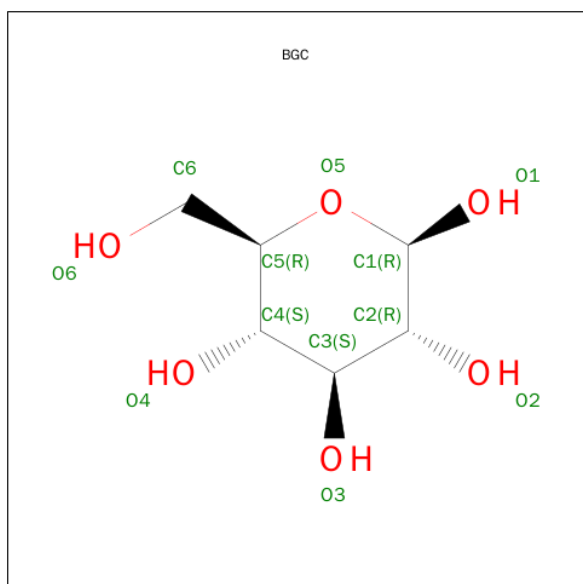
There are 5 unique types of molecules in this entry. The entry contains 4937 atoms, of which 0 are hydrogens and 0 are deuteriums.

In the tables below, the ZeroOcc column contains the number of atoms modelled with zero occupancy, the AltConf column contains the number of residues with at least one atom in alternate conformation and the Trace column contains the number of residues modelled with at most 2 atoms.

- Molecule 1 is a protein called OUTER MEMBRANE PROTEIN G.

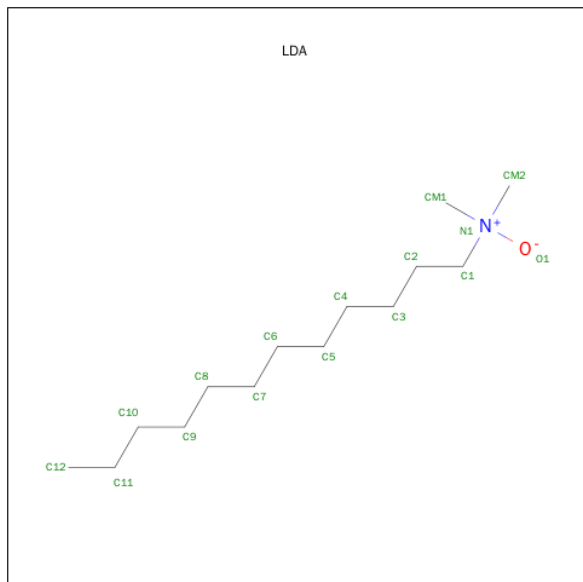
Mol	Chain	Residues	Atoms					ZeroOcc	AltConf	Trace
1	A	277	Total	C	N	O	S	0	0	0
			2298	1461	381	451	5			
1	B	277	Total	C	N	O	S	0	0	0
			2298	1461	381	451	5			

- Molecule 2 is SUGAR (BETA-D-GLUCOSE) (three-letter code: BGC) (formula: C₆H₁₂O₆).



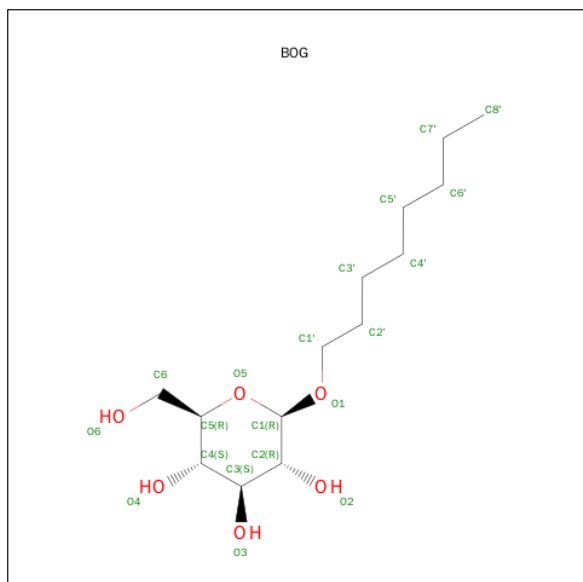
Mol	Chain	Residues	Atoms			ZeroOcc	AltConf
2	A	1	Total	C	O	0	0
			12	6	6		
2	B	1	Total	C	O	0	0
			12	6	6		
2	B	1	Total	C	O	0	0
			12	6	6		
2	B	1	Total	C	O	0	0
			12	6	6		

- Molecule 3 is LAURYL DIMETHYLAMINE-N-OXIDE (three-letter code: LDA) (formula: $C_{14}H_{31}NO$).



Mol	Chain	Residues	Atoms				ZeroOcc	AltConf
3	A	1	Total	C	N	O	0	0
			16	14	1	1		

- Molecule 4 is SUGAR (B-OCTYLGLUCOSIDE) (three-letter code: BOG) (formula: $C_{14}H_{28}O_6$).



Mol	Chain	Residues	Atoms			ZeroOcc	AltConf
4	A	1	Total	C	O	0	0
			20	14	6		

Continued on next page...

Continued from previous page...

Mol	Chain	Residues	Atoms			ZeroOcc	AltConf
4	A	1	Total	C	O	0	0
			20	14	6		
4	A	1	Total	C	O	0	0
			20	14	6		
4	A	1	Total	C	O	0	0
			20	14	6		
4	A	1	Total	C	O	0	0
			20	14	6		
4	A	1	Total	C	O	0	0
			20	14	6		
4	A	1	Total	C	O	0	0
			20	14	6		
4	B	1	Total	C	O	0	0
			20	14	6		
4	B	1	Total	C	O	0	0
			20	14	6		
4	B	1	Total	C	O	0	0
			20	14	6		
4	B	1	Total	C	O	0	0
			20	14	6		

- Molecule 5 is water.

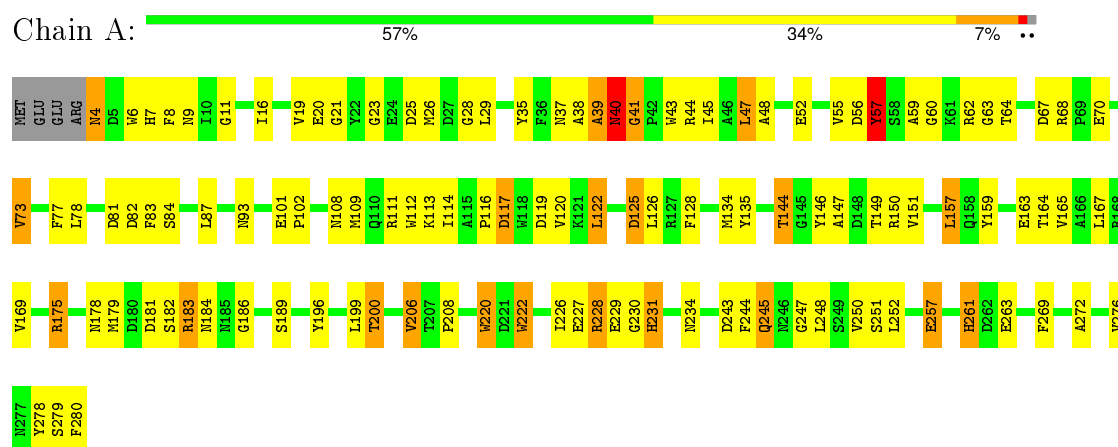
Mol	Chain	Residues	Atoms		ZeroOcc	AltConf
5	A	17	Total	O	0	0
			17	17		
5	B	20	Total	O	0	0
			20	20		

3 Residue-property plots

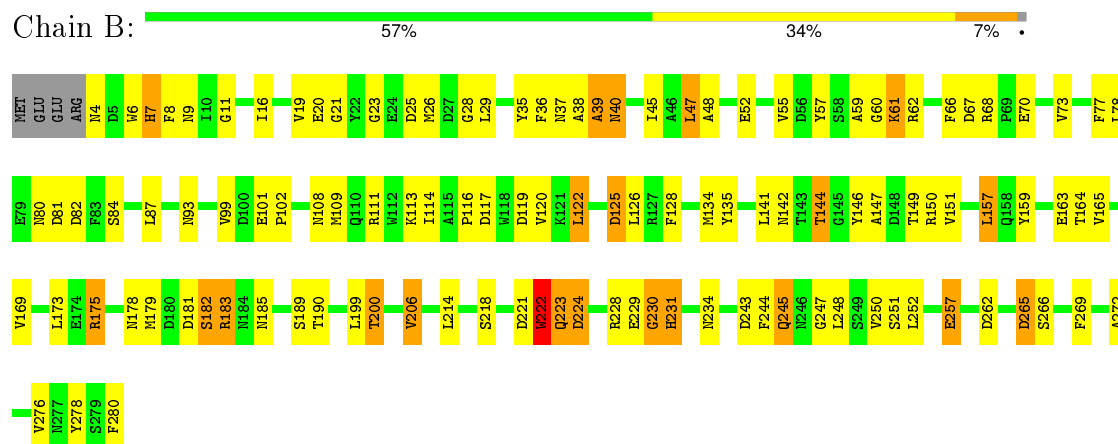
These plots are drawn for all protein, RNA and DNA chains in the entry. The first graphic for a chain summarises the proportions of errors displayed in the second graphic. The second graphic shows the sequence view annotated by issues in geometry and electron density. Residues are color-coded according to the number of geometric quality criteria for which they contain at least one outlier: green = 0, yellow = 1, orange = 2 and red = 3 or more. A red dot above a residue indicates a poor fit to the electron density ($\text{RSRZ} > 2$). Stretches of 2 or more consecutive residues without any outlier are shown as a green connector. Residues present in the sample, but not in the model, are shown in grey.

Note EDS was not executed.

• Molecule 1: OUTER MEMBRANE PROTEIN G



• Molecule 1: OUTER MEMBRANE PROTEIN G



4 Data and refinement statistics

Xtriage (Phenix) and EDS were not executed - this section will therefore be incomplete.

Property	Value	Source
Space group	P 21 21 21	Depositor
Cell constants a, b, c, α , β , γ	70.38 Å 71.14 Å 191.61 Å 90.00° 90.00° 90.00°	Depositor
Resolution (Å)	19.87 – 2.70	Depositor
% Data completeness (in resolution range)	100.0 (19.87-2.70)	Depositor
R_{merge}	0.10	Depositor
R_{sym}	(Not available)	Depositor
Refinement program	REFMAC 5.2.0019	Depositor
R, R_{free}	0.245 , 0.301	Depositor
Estimated twinning fraction	No twinning to report.	Xtriage
Total number of atoms	4937	wwPDB-VP
Average B, all atoms (Å ²)	55.0	wwPDB-VP

5 Model quality

5.1 Standard geometry

Bond lengths and bond angles in the following residue types are not validated in this section: LDA, BGC, BOG

The Z score for a bond length (or angle) is the number of standard deviations the observed value is removed from the expected value. A bond length (or angle) with $|Z| > 5$ is considered an outlier worth inspection. RMSZ is the root-mean-square of all Z scores of the bond lengths (or angles).

Mol	Chain	Bond lengths		Bond angles	
		RMSZ	$\# Z > 5$	RMSZ	$\# Z > 5$
1	A	0.77	0/2372	0.82	2/3226 (0.1%)
1	B	0.77	0/2372	0.81	1/3226 (0.0%)
All	All	0.77	0/4744	0.82	3/6452 (0.0%)

Chiral center outliers are detected by calculating the chiral volume of a chiral center and verifying if the center is modelled as a planar moiety or with the opposite hand. A planarity outlier is detected by checking planarity of atoms in a peptide group, atoms in a mainchain group or atoms of a sidechain that are expected to be planar.

Mol	Chain	#Chirality outliers	#Planarity outliers
1	A	0	3
1	B	0	3
All	All	0	6

There are no bond length outliers.

All (3) bond angle outliers are listed below:

Mol	Chain	Res	Type	Atoms	Z	Observed(°)	Ideal(°)
1	A	41	GLY	N-CA-C	-9.52	89.31	113.10
1	A	47	LEU	CA-CB-CG	6.71	130.72	115.30
1	B	47	LEU	CA-CB-CG	6.33	129.86	115.30

There are no chirality outliers.

5 of 6 planarity outliers are listed below:

Mol	Chain	Res	Type	Group
1	A	245	GLN	Peptide
1	A	25	ASP	Peptide
1	A	40	ASN	Peptide

Continued on next page...

Continued from previous page...

Mol	Chain	Res	Type	Group
1	B	182	SER	Peptide
1	B	25	ASP	Peptide

5.2 Too-close contacts

In the following table, the Non-H and H(model) columns list the number of non-hydrogen atoms and hydrogen atoms in the chain respectively. The H(added) column lists the number of hydrogen atoms added and optimized by MolProbity. The Clashes column lists the number of clashes within the asymmetric unit, whereas Symm-Clashes lists symmetry related clashes.

Mol	Chain	Non-H	H(model)	H(added)	Clashes	Symm-Clashes
1	A	2298	0	2039	98	0
1	B	2298	0	2039	103	0
2	A	12	0	12	0	0
2	B	36	0	36	0	0
3	A	16	0	31	1	0
4	A	160	0	224	17	0
4	B	80	0	112	12	0
5	A	17	0	0	0	0
5	B	20	0	0	1	0
All	All	4937	0	4493	217	0

The all-atom clashscore is defined as the number of clashes found per 1000 atoms (including hydrogen atoms). The all-atom clashscore for this structure is 23.

The worst 5 of 217 close contacts within the same asymmetric unit are listed below, sorted by their clash magnitude.

Atom-1	Atom-2	Interatomic distance (Å)	Clash overlap (Å)
1:A:7:HIS:O	1:A:39:ALA:CB	1.78	1.32
1:B:7:HIS:O	1:B:39:ALA:CB	1.80	1.26
1:B:7:HIS:O	1:B:39:ALA:HB2	1.47	1.15
1:A:7:HIS:O	1:A:39:ALA:HB2	1.41	1.13
1:A:38:ALA:HA	1:A:39:ALA:HB2	1.19	1.12

There are no symmetry-related clashes.

5.3 Torsion angles

5.3.1 Protein backbone

In the following table, the Percentiles column shows the percent Ramachandran outliers of the chain as a percentile score with respect to all X-ray entries followed by that with respect to entries of similar resolution.

The Analysed column shows the number of residues for which the backbone conformation was analysed, and the total number of residues.

Mol	Chain	Analysed	Favoured	Allowed	Outliers	Percentiles	
1	A	275/281 (98%)	239 (87%)	28 (10%)	8 (3%)	6	14
1	B	275/281 (98%)	244 (89%)	21 (8%)	10 (4%)	4	9
All	All	550/562 (98%)	483 (88%)	49 (9%)	18 (3%)	5	11

5 of 18 Ramachandran outliers are listed below:

Mol	Chain	Res	Type
1	A	39	ALA
1	A	57	TYR
1	A	77	PHE
1	A	231	HIS
1	B	39	ALA

5.3.2 Protein sidechains

In the following table, the Percentiles column shows the percent sidechain outliers of the chain as a percentile score with respect to all X-ray entries followed by that with respect to entries of similar resolution.

The Analysed column shows the number of residues for which the sidechain conformation was analysed, and the total number of residues.

Mol	Chain	Analysed	Rotameric	Outliers	Percentiles	
1	A	235/239 (98%)	203 (86%)	32 (14%)	5	11
1	B	235/239 (98%)	204 (87%)	31 (13%)	5	12
All	All	470/478 (98%)	407 (87%)	63 (13%)	5	11

5 of 63 residues with a non-rotameric sidechain are listed below:

Mol	Chain	Res	Type
1	A	228	ARG

Continued on next page...

Continued from previous page...

Mol	Chain	Res	Type
1	B	29	LEU
1	B	223	GLN
1	A	257	GLU
1	A	279	SER

Some sidechains can be flipped to improve hydrogen bonding and reduce clashes. 5 of 17 such sidechains are listed below:

Mol	Chain	Res	Type
1	A	246	ASN
1	B	4	ASN
1	B	185	ASN
1	A	203	ASN
1	B	203	ASN

5.3.3 RNA ⓘ

There are no RNA molecules in this entry.

5.4 Non-standard residues in protein, DNA, RNA chains ⓘ

There are no non-standard protein/DNA/RNA residues in this entry.

5.5 Carbohydrates ⓘ

There are no carbohydrates in this entry.

5.6 Ligand geometry ⓘ

17 ligands are modelled in this entry.

In the following table, the Counts columns list the number of bonds (or angles) for which Mogul statistics could be retrieved, the number of bonds (or angles) that are observed in the model and the number of bonds (or angles) that are defined in the chemical component dictionary. The Link column lists molecule types, if any, to which the group is linked. The Z score for a bond length (or angle) is the number of standard deviations the observed value is removed from the expected value. A bond length (or angle) with $|Z| > 2$ is considered an outlier worth inspection. RMSZ is the root-mean-square of all Z scores of the bond lengths (or angles).

Mol	Type	Chain	Res	Link	Bond lengths			Bond angles		
					Counts	RMSZ	# Z > 2	Counts	RMSZ	# Z > 2
2	BGC	A	1281	-	12,12,12	0.48	0	17,17,17	0.71	0
3	LDA	A	1282	-	15,15,15	3.47	2 (13%)	16,17,17	1.10	2 (12%)
4	BOG	A	1283	-	20,20,20	1.45	2 (10%)	25,25,25	1.05	2 (8%)
4	BOG	A	1284	-	20,20,20	1.10	1 (5%)	25,25,25	2.10	7 (28%)
4	BOG	A	1285	-	20,20,20	1.47	3 (15%)	25,25,25	3.86	10 (40%)
4	BOG	A	1286	-	20,20,20	1.34	2 (10%)	25,25,25	1.05	2 (8%)
4	BOG	A	1287	-	20,20,20	1.43	2 (10%)	25,25,25	1.72	4 (16%)
4	BOG	A	1288	-	20,20,20	1.34	2 (10%)	25,25,25	1.55	4 (16%)
4	BOG	A	1289	-	20,20,20	1.01	2 (10%)	25,25,25	1.07	1 (4%)
4	BOG	A	1290	-	20,20,20	1.18	1 (5%)	25,25,25	1.76	2 (8%)
2	BGC	B	1281	-	12,12,12	0.61	0	17,17,17	1.77	4 (23%)
2	BGC	B	1282	-	12,12,12	0.48	0	17,17,17	1.45	4 (23%)
2	BGC	B	1283	-	12,12,12	0.43	0	17,17,17	0.96	0
4	BOG	B	1284	-	20,20,20	1.36	2 (10%)	25,25,25	1.37	3 (12%)
4	BOG	B	1285	-	20,20,20	1.36	1 (5%)	25,25,25	1.66	4 (16%)
4	BOG	B	1286	-	20,20,20	1.32	2 (10%)	25,25,25	2.14	4 (16%)
4	BOG	B	1287	-	20,20,20	0.84	1 (5%)	25,25,25	1.02	3 (12%)

In the following table, the Chirals column lists the number of chiral outliers, the number of chiral centers analysed, the number of these observed in the model and the number defined in the chemical component dictionary. Similar counts are reported in the Torsion and Rings columns. '-' means no outliers of that kind were identified.

Mol	Type	Chain	Res	Link	Chirals	Torsions	Rings
2	BGC	A	1281	-	-	0/2/22/22	0/1/1/1
3	LDA	A	1282	-	-	0/13/13/13	0/0/0/0
4	BOG	A	1283	-	-	0/11/31/31	0/1/1/1
4	BOG	A	1284	-	-	1/11/31/31	0/1/1/1
4	BOG	A	1285	-	-	0/11/31/31	0/1/1/1
4	BOG	A	1286	-	-	0/11/31/31	0/1/1/1
4	BOG	A	1287	-	-	0/11/31/31	0/1/1/1
4	BOG	A	1288	-	-	0/11/31/31	0/1/1/1
4	BOG	A	1289	-	-	0/11/31/31	0/1/1/1
4	BOG	A	1290	-	-	1/11/31/31	0/1/1/1
2	BGC	B	1281	-	-	0/2/22/22	0/1/1/1
2	BGC	B	1282	-	-	0/2/22/22	0/1/1/1
2	BGC	B	1283	-	-	0/2/22/22	0/1/1/1
4	BOG	B	1284	-	-	0/11/31/31	0/1/1/1
4	BOG	B	1285	-	-	0/11/31/31	0/1/1/1

Continued on next page...

Continued from previous page...

Mol	Type	Chain	Res	Link	Chirals	Torsions	Rings
4	BOG	B	1286	-	-	0/11/31/31	0/1/1/1
4	BOG	B	1287	-	-	0/11/31/31	0/1/1/1

The worst 5 of 23 bond length outliers are listed below:

Mol	Chain	Res	Type	Atoms	Z	Observed(Å)	Ideal(Å)
3	A	1282	LDA	O1-N1	-13.10	1.27	1.39
3	A	1282	LDA	C1-N1	-2.46	1.46	1.51
4	A	1288	BOG	O5-C1	2.38	1.47	1.41
4	A	1286	BOG	O5-C1	2.40	1.48	1.41
4	A	1285	BOG	C4-C5	2.49	1.58	1.53

The worst 5 of 56 bond angle outliers are listed below:

Mol	Chain	Res	Type	Atoms	Z	Observed(°)	Ideal(°)
4	A	1285	BOG	O5-C1-C2	-8.29	93.27	110.28
4	A	1285	BOG	C1'-O1-C1	-6.00	103.46	113.94
4	B	1286	BOG	O1-C1-C2	-5.58	101.00	108.04
4	A	1284	BOG	O5-C1-C2	-4.84	100.35	110.28
4	A	1285	BOG	C1-O5-C5	-4.71	104.59	113.75

There are no chirality outliers.

All (2) torsion outliers are listed below:

Mol	Chain	Res	Type	Atoms
4	A	1290	BOG	C1'-O1-C1-O5
4	A	1284	BOG	C1-O1-C1'-C2'

There are no ring outliers.

11 monomers are involved in 30 short contacts:

Mol	Chain	Res	Type	Clashes	Symm-Clashes
3	A	1282	LDA	1	0
4	A	1283	BOG	3	0
4	A	1284	BOG	2	0
4	A	1286	BOG	2	0
4	A	1287	BOG	4	0
4	A	1289	BOG	5	0
4	A	1290	BOG	1	0
4	B	1284	BOG	4	0
4	B	1285	BOG	3	0

Continued on next page...

Continued from previous page...

Mol	Chain	Res	Type	Clashes	Symm-Clashes
4	B	1286	BOG	2	0
4	B	1287	BOG	3	0

5.7 Other polymers [i](#)

There are no such residues in this entry.

5.8 Polymer linkage issues [i](#)

There are no chain breaks in this entry.

6 Fit of model and data ⓘ

6.1 Protein, DNA and RNA chains ⓘ

EDS was not executed - this section will therefore be empty.

6.2 Non-standard residues in protein, DNA, RNA chains ⓘ

EDS was not executed - this section will therefore be empty.

6.3 Carbohydrates ⓘ

EDS was not executed - this section will therefore be empty.

6.4 Ligands ⓘ

EDS was not executed - this section will therefore be empty.

6.5 Other polymers ⓘ

EDS was not executed - this section will therefore be empty.