



# Full wwPDB X-ray Structure Validation Report ⓘ

Feb 1, 2016 – 09:03 PM GMT

PDB ID : 4UOE  
Title : Crystal Structure of Plasmodium Falciparum Spermidine Synthase in Complex with 5'-Deoxy-5'-Methyladenosine and 4-Aminomethylaniline  
Authors : Sprenger, J.; Halander, J.C.; Svensson, B.; Al-Karadaghi, S.; Person, L.  
Deposited on : 2014-06-03  
Resolution : 2.05 Å(reported)

This is a Full wwPDB X-ray Structure Validation Report for a publicly released PDB entry.  
We welcome your comments at [validation@mail.wwpdb.org](mailto:validation@mail.wwpdb.org)  
A user guide is available at  
<http://wwpdb.org/validation/2016/XrayValidationReportHelp>  
with specific help available everywhere you see the ⓘ symbol.

---

The following versions of software and data (see [references ⓘ](#)) were used in the production of this report:

MolProbity : 4.02b-467  
Mogul : 1.7 (RC4), CSD as536be (2015)  
Xtriage (Phenix) : 1.9-1692  
EDS : rb-20026688  
Percentile statistics : 20151230.v01 (using entries in the PDB archive December 30th 2015)  
Refmac : 5.8.0135  
CCP4 : 6.5.0  
Ideal geometry (proteins) : Engh & Huber (2001)  
Ideal geometry (DNA, RNA) : Parkinson et al. (1996)  
Validation Pipeline (wwPDB-VP) : trunk26865

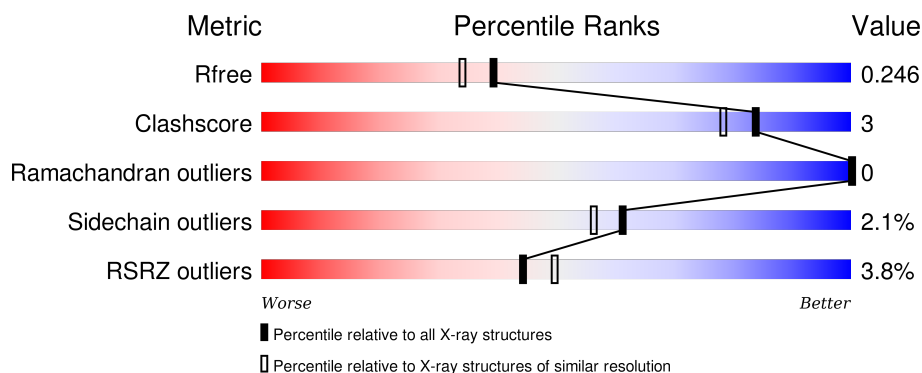
# 1 Overall quality at a glance

The following experimental techniques were used to determine the structure:

## *X-RAY DIFFRACTION*

The reported resolution of this entry is 2.05 Å.

Percentile scores (ranging between 0-100) for global validation metrics of the entry are shown in the following graphic. The table shows the number of entries on which the scores are based.



Metric	Whole archive (#Entries)	Similar resolution (#Entries, resolution range(Å))
$R_{free}$	91344	1192 (2.04-2.04)
Clashscore	102246	1269 (2.04-2.04)
Ramachandran outliers	100387	1258 (2.04-2.04)
Sidechain outliers	100360	1258 (2.04-2.04)
RSRZ outliers	91569	1194 (2.04-2.04)

The table below summarises the geometric issues observed across the polymeric chains and their fit to the electron density. The red, orange, yellow and green segments on the lower bar indicate the fraction of residues that contain outliers for  $\geq 3$ , 2, 1 and 0 types of geometric quality criteria. A grey segment represents the fraction of residues that are not modelled. The numeric value for each fraction is indicated below the corresponding segment, with a dot representing fractions  $\leq 5\%$ . The upper red bar (where present) indicates the fraction of residues that have poor fit to the electron density. The numeric value is given above the bar.

Mol	Chain	Length	Quality of chain
1	A	281	<div> <div>6%</div> <div>93%</div> <div>7%</div> </div>
1	B	281	<div> <div>2%</div> <div>87%</div> <div>11%</div> <div>..</div> </div>
1	C	281	<div> <div>3%</div> <div>93%</div> <div>7%</div> </div>

The following table lists non-polymeric compounds, carbohydrate monomers and non-standard residues in protein, DNA, RNA chains that are outliers for geometric or electron-density-fit criteria:

Mol	Type	Chain	Res	Chirality	Geometry	Clashes	Electron density
5	1PG	B	702	-	-	-	X

## 2 Entry composition [i](#)

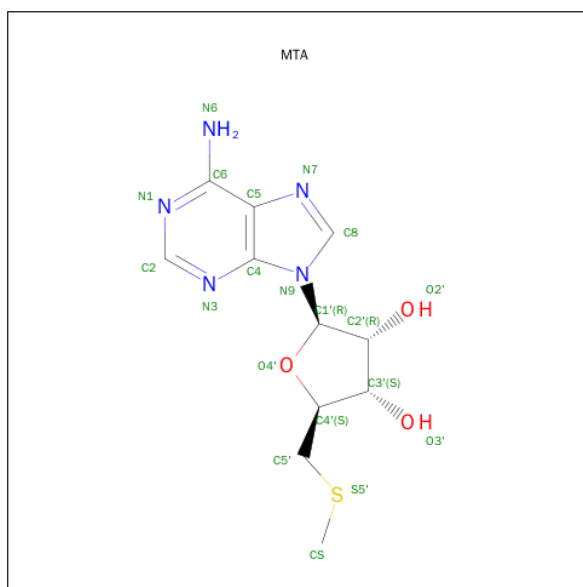
There are 6 unique types of molecules in this entry. The entry contains 7295 atoms, of which 0 are hydrogens and 0 are deuteriums.

In the tables below, the ZeroOcc column contains the number of atoms modelled with zero occupancy, the AltConf column contains the number of residues with at least one atom in alternate conformation and the Trace column contains the number of residues modelled with at most 2 atoms.

- Molecule 1 is a protein called SPERMIDINE SYNTHASE.

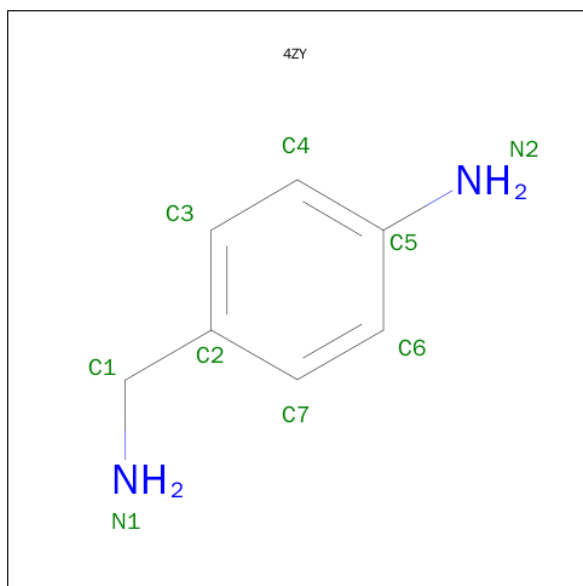
Mol	Chain	Residues	Atoms					ZeroOcc	AltConf	Trace
1	A	281	Total	C	N	O	S	0	0	0
			2254	1463	352	425	14			
1	B	279	Total	C	N	O	S	0	1	0
			2245	1459	350	422	14			
1	C	281	Total	C	N	O	S	0	0	0
			2254	1463	352	425	14			

- Molecule 2 is 5'-DEOXY-5'-METHYLTHIOADENOSINE (three-letter code: MTA) (formula:  $C_{11}H_{15}N_5O_3S$ ).



Mol	Chain	Residues	Atoms					ZeroOcc	AltConf
2	A	1	Total	C	N	O	S	0	0
			20	11	5	3	1		
2	B	1	Total	C	N	O	S	0	0
			20	11	5	3	1		
2	C	1	Total	C	N	O	S	0	0
			20	11	5	3	1		

- Molecule 3 is 4-(AMINOMETHYL)ANILINE (three-letter code: 4ZY) (formula:  $C_7H_{10}N_2$ ).



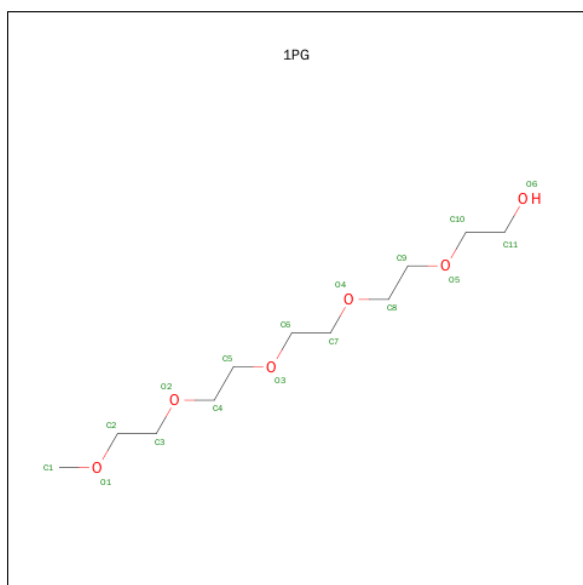
Mol	Chain	Residues	Atoms			ZeroOcc	AltConf
3	A	1	Total	C	N	0	0
			9	7	2		
3	B	1	Total	C	N	0	0
			9	7	2		
3	C	1	Total	C	N	0	0
			9	7	2		

- Molecule 4 is GLYCEROL (three-letter code: GOL) (formula:  $C_3H_8O_3$ ).



Mol	Chain	Residues	Atoms			ZeroOcc	AltConf
4	B	1	Total	C	O	0	0
			6	3	3		
4	C	1	Total	C	O	0	0
			6	3	3		

- Molecule 5 is 2-(2-{2-[2-(2-METHOXY-ETHOXY)-ETHOXY]-ETHOXY}-ETHOXY)-ETHANOL (three-letter code: 1PG) (formula: C<sub>11</sub>H<sub>24</sub>O<sub>6</sub>).



Mol	Chain	Residues	Atoms			ZeroOcc	AltConf
5	B	1	Total	C	O	0	0
			17	11	6		

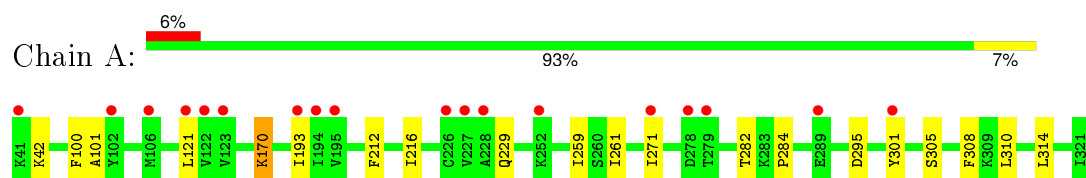
- Molecule 6 is water.

Mol	Chain	Residues	Atoms		ZeroOcc	AltConf
6	A	106	Total	O	0	0
			106	106		
6	B	144	Total	O	0	0
			144	144		
6	C	176	Total	O	0	0
			176	176		

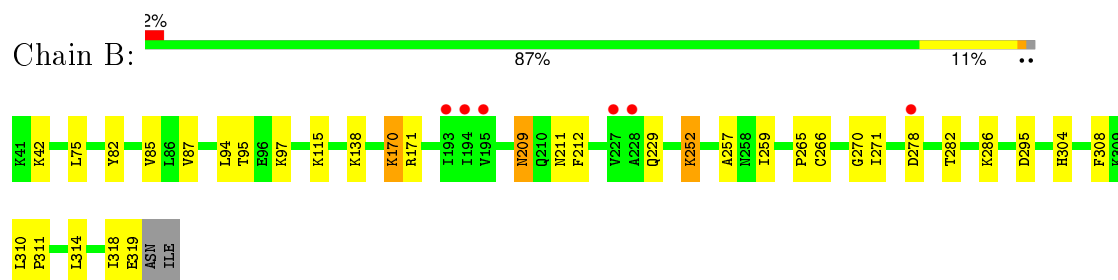
### 3 Residue-property plots [i](#)

These plots are drawn for all protein, RNA and DNA chains in the entry. The first graphic for a chain summarises the proportions of errors displayed in the second graphic. The second graphic shows the sequence view annotated by issues in geometry and electron density. Residues are color-coded according to the number of geometric quality criteria for which they contain at least one outlier: green = 0, yellow = 1, orange = 2 and red = 3 or more. A red dot above a residue indicates a poor fit to the electron density ( $RSRZ > 2$ ). Stretches of 2 or more consecutive residues without any outlier are shown as a green connector. Residues present in the sample, but not in the model, are shown in grey.

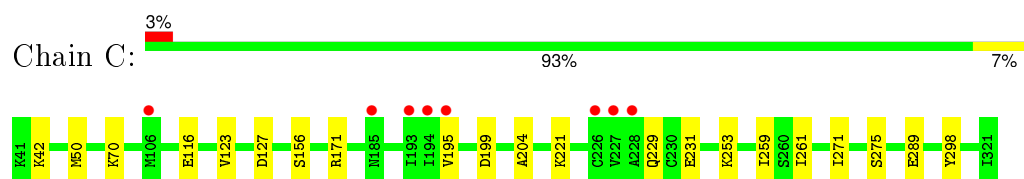
#### • Molecule 1: SPERMIDINE SYNTHASE



#### • Molecule 1: SPERMIDINE SYNTHASE



#### • Molecule 1: SPERMIDINE SYNTHASE



## 4 Data and refinement statistics

Property	Value	Source
Space group	C 1 2 1	Depositor
Cell constants a, b, c, $\alpha$ , $\beta$ , $\gamma$	198.05Å 134.62Å 48.31Å 90.00° 95.33° 90.00°	Depositor
Resolution (Å)	29.53 – 2.05 29.53 – 2.05	Depositor EDS
% Data completeness (in resolution range)	95.9 (29.53-2.05) 96.0 (29.53-2.05)	Depositor EDS
$R_{merge}$	0.07	Depositor
$R_{sym}$	(Not available)	Depositor
$\langle I/\sigma(I) \rangle$ <sup>1</sup>	2.80 (at 2.04Å)	Xtriage
Refinement program	REFMAC 5.7.0029	Depositor
R, $R_{free}$	0.199 , 0.245 0.205 , 0.246	Depositor DCC
$R_{free}$ test set	3814 reflections (5.29%)	DCC
Wilson B-factor (Å <sup>2</sup> )	22.6	Xtriage
Anisotropy	0.228	Xtriage
Bulk solvent $k_{sol}$ (e/Å <sup>3</sup> ), $B_{sol}$ (Å <sup>2</sup> )	0.38 , 47.8	EDS
Estimated twinning fraction	No twinning to report.	Xtriage
L-test for twinning <sup>2</sup>	$\langle  L  \rangle = 0.49$ , $\langle L^2 \rangle = 0.33$	Xtriage
Outliers	0 of 76131 reflections	Xtriage
$F_o, F_c$ correlation	0.94	EDS
Total number of atoms	7295	wwPDB-VP
Average B, all atoms (Å <sup>2</sup> )	28.0	wwPDB-VP

Xtriage's analysis on translational NCS is as follows: *The largest off-origin peak in the Patterson function is 4.22% of the height of the origin peak. No significant pseudotranslation is detected.*

<sup>1</sup>Intensities estimated from amplitudes.

<sup>2</sup>Theoretical values of  $\langle |L| \rangle$ ,  $\langle L^2 \rangle$  for acentric reflections are 0.5, 0.375 respectively for untwinned datasets, and 0.333, 0.2 for perfectly twinned datasets.



## 5 Model quality ⓘ

### 5.1 Standard geometry ⓘ

Bond lengths and bond angles in the following residue types are not validated in this section: 4ZY, GOL, MTA, 1PG

The Z score for a bond length (or angle) is the number of standard deviations the observed value is removed from the expected value. A bond length (or angle) with  $|Z| > 5$  is considered an outlier worth inspection. RMSZ is the root-mean-square of all Z scores of the bond lengths (or angles).

Mol	Chain	Bond lengths		Bond angles	
		RMSZ	$\# Z  > 5$	RMSZ	$\# Z  > 5$
1	A	0.90	0/2304	0.89	1/3111 (0.0%)
1	B	0.96	0/2295	0.92	1/3100 (0.0%)
1	C	1.04	1/2304 (0.0%)	0.93	2/3111 (0.1%)
All	All	0.97	1/6903 (0.0%)	0.91	4/9322 (0.0%)

All (1) bond length outliers are listed below:

Mol	Chain	Res	Type	Atoms	Z	Observed(Å)	Ideal(Å)
1	C	298	TYR	CE2-CZ	5.45	1.45	1.38

All (4) bond angle outliers are listed below:

Mol	Chain	Res	Type	Atoms	Z	Observed(°)	Ideal(°)
1	A	295	ASP	CB-CG-OD1	6.37	124.03	118.30
1	C	171	ARG	NE-CZ-NH2	-6.10	117.25	120.30
1	B	171	ARG	NE-CZ-NH2	-5.59	117.50	120.30
1	C	50	MET	CG-SD-CE	5.09	108.35	100.20

There are no chirality outliers.

There are no planarity outliers.

### 5.2 Too-close contacts ⓘ

In the following table, the Non-H and H(model) columns list the number of non-hydrogen atoms and hydrogen atoms in the chain respectively. The H(added) column lists the number of hydrogen atoms added and optimized by MolProbity. The Clashes column lists the number of clashes within the asymmetric unit, whereas Symm-Clashes lists symmetry related clashes.

Mol	Chain	Non-H	H(model)	H(added)	Clashes	Symm-Clashes
1	A	2254	0	2265	10	0
1	B	2245	0	2258	20	0
1	C	2254	0	2265	9	0
2	A	20	0	15	0	0
2	B	20	0	15	0	0
2	C	20	0	15	0	0
3	A	9	0	10	0	0
3	B	9	0	10	0	0
3	C	9	0	10	0	0
4	B	6	0	8	0	0
4	C	6	0	8	0	0
5	B	17	0	24	2	0
6	A	106	0	0	1	0
6	B	144	0	0	2	0
6	C	176	0	0	3	0
All	All	7295	0	6903	41	0

The all-atom clashscore is defined as the number of clashes found per 1000 atoms (including hydrogen atoms). The all-atom clashscore for this structure is 3.

All (41) close contacts within the same asymmetric unit are listed below, sorted by their clash magnitude.

Atom-1	Atom-2	Interatomic distance (Å)	Clash overlap (Å)
1:B:310:LEU:HD13	1:B:314:LEU:HD23	1.54	0.89
1:B:138:LYS:HE2	6:B:2055:HOH:O	1.79	0.80
1:B:259:ILE:HD11	1:B:271:ILE:HD11	1.73	0.71
5:B:702:1PG:H101	5:B:702:1PG:O4	1.94	0.67
1:A:212:PHE:CE2	1:A:216:ILE:HD11	2.34	0.63
1:B:170:LYS:HE3	6:B:2027:HOH:O	2.02	0.58
1:A:170:LYS:HG2	6:A:2054:HOH:O	2.03	0.58
1:A:259:ILE:HD11	1:A:271:ILE:HD11	1.87	0.56
1:C:221:LYS:HE3	6:C:2091:HOH:O	2.06	0.56
5:B:702:1PG:C10	5:B:702:1PG:O4	2.54	0.56
1:B:209:ASN:ND2	1:B:212:PHE:H	2.07	0.53
1:C:229:GLN:HE21	1:C:231:GLU:H	1.56	0.52
1:A:284:PRO:HG2	1:A:301:TYR:CE1	2.44	0.52
1:B:282:THR:HG22	1:B:308:PHE:CG	2.45	0.52
1:A:282:THR:HG22	1:A:308:PHE:CG	2.45	0.51
1:B:252:LYS:HD2	1:B:278:ASP:OD1	2.12	0.50
1:C:221:LYS:CE	6:C:2091:HOH:O	2.59	0.49
1:B:265:PRO:O	1:B:266:CYS:HB2	2.11	0.49
1:B:94:LEU:HD12	1:B:94:LEU:C	2.33	0.49

*Continued on next page...*

*Continued from previous page...*

Atom-1	Atom-2	Interatomic distance (Å)	Clash overlap (Å)
1:A:100:PHE:C	1:A:100:PHE:CD1	2.87	0.48
1:B:318:ILE:O	1:B:319:GLU:C	2.52	0.47
1:B:209:ASN:HD22	1:B:209:ASN:C	2.18	0.46
1:B:295:ASP:N	1:B:295:ASP:OD1	2.48	0.45
1:B:310:LEU:HD13	1:B:314:LEU:CD2	2.35	0.45
1:A:310:LEU:HD13	1:A:314:LEU:HD23	1.99	0.45
1:A:121:LEU:HB3	1:A:193:ILE:HG12	1.99	0.44
1:C:253:LYS:HB3	1:C:275:SER:HB2	2.01	0.43
1:B:85:VAL:HG22	1:B:95:THR:HG22	2.00	0.43
1:B:257:ALA:O	1:B:270:GLY:HA2	2.19	0.42
1:B:304:HIS:CD2	1:B:304:HIS:C	2.92	0.42
1:B:75:LEU:HB3	1:B:87:VAL:HB	2.01	0.42
1:C:199:ASP:O	1:C:204:ALA:HB3	2.20	0.42
1:B:209:ASN:ND2	1:B:211:ASN:HB3	2.35	0.42
1:B:82:TYR:CD2	1:B:97:LYS:HD3	2.55	0.41
1:C:289:GLU:OE1	6:C:2152:HOH:O	2.22	0.41
1:A:282:THR:HG22	1:A:308:PHE:CD2	2.55	0.41
1:C:127:ASP:HA	1:C:156:SER:OG	2.21	0.41
1:C:259:ILE:HD11	1:C:271:ILE:HD11	2.03	0.41
1:A:100:PHE:CD1	1:A:101:ALA:N	2.89	0.41
1:B:310:LEU:O	1:B:311:PRO:C	2.58	0.40
1:C:123:VAL:HB	1:C:195:VAL:HA	2.03	0.40

There are no symmetry-related clashes.

## 5.3 Torsion angles [i](#)

### 5.3.1 Protein backbone [i](#)

In the following table, the Percentiles column shows the percent Ramachandran outliers of the chain as a percentile score with respect to all X-ray entries followed by that with respect to entries of similar resolution.

The Analysed column shows the number of residues for which the backbone conformation was analysed, and the total number of residues.

Mol	Chain	Analysed	Favoured	Allowed	Outliers	Percentiles	
1	A	279/281 (99%)	270 (97%)	9 (3%)	0	100	100
1	B	278/281 (99%)	267 (96%)	11 (4%)	0	100	100
1	C	279/281 (99%)	272 (98%)	7 (2%)	0	100	100

*Continued on next page...*

*Continued from previous page...*

Mol	Chain	Analysed	Favoured	Allowed	Outliers	Percentiles	
All	All	836/843 (99%)	809 (97%)	27 (3%)	0	100	100

There are no Ramachandran outliers to report.

### 5.3.2 Protein sidechains ⓘ

In the following table, the Percentiles column shows the percent sidechain outliers of the chain as a percentile score with respect to all X-ray entries followed by that with respect to entries of similar resolution.

The Analysed column shows the number of residues for which the sidechain conformation was analysed, and the total number of residues.

Mol	Chain	Analysed	Rotameric	Outliers	Percentiles	
1	A	253/253 (100%)	248 (98%)	5 (2%)	63	58
1	B	252/253 (100%)	245 (97%)	7 (3%)	51	44
1	C	253/253 (100%)	249 (98%)	4 (2%)	70	67
All	All	758/759 (100%)	742 (98%)	16 (2%)	61	56

All (16) residues with a non-rotameric sidechain are listed below:

Mol	Chain	Res	Type
1	A	42	LYS
1	A	170	LYS
1	A	229	GLN
1	A	261	ILE
1	A	305	SER
1	B	42	LYS
1	B	115	LYS
1	B	170	LYS
1	B	209	ASN
1	B	229	GLN
1	B	252	LYS
1	B	286	LYS
1	C	42	LYS
1	C	70	LYS
1	C	116	GLU
1	C	261	ILE

Some sidechains can be flipped to improve hydrogen bonding and reduce clashes. All (13) such sidechains are listed below:

Mol	Chain	Res	Type
1	A	93	GLN
1	A	142	ASN
1	A	210	GLN
1	A	218	ASN
1	B	93	GLN
1	B	209	ASN
1	B	211	ASN
1	B	285	ASN
1	C	73	ASN
1	C	210	GLN
1	C	211	ASN
1	C	229	GLN
1	C	285	ASN

### 5.3.3 RNA [i](#)

There are no RNA molecules in this entry.

## 5.4 Non-standard residues in protein, DNA, RNA chains [i](#)

There are no non-standard protein/DNA/RNA residues in this entry.

## 5.5 Carbohydrates [i](#)

There are no carbohydrates in this entry.

## 5.6 Ligand geometry [i](#)

9 ligands are modelled in this entry.

In the following table, the Counts columns list the number of bonds (or angles) for which Mogul statistics could be retrieved, the number of bonds (or angles) that are observed in the model and the number of bonds (or angles) that are defined in the chemical component dictionary. The Link column lists molecule types, if any, to which the group is linked. The Z score for a bond length (or angle) is the number of standard deviations the observed value is removed from the expected value. A bond length (or angle) with  $|Z| > 2$  is considered an outlier worth inspection. RMSZ is the root-mean-square of all Z scores of the bond lengths (or angles).

Mol	Type	Chain	Res	Link	Bond lengths			Bond angles		
					Counts	RMSZ	$\# Z  > 2$	Counts	RMSZ	$\# Z  > 2$
2	MTA	A	401	-	17,22,22	1.15	1 (5%)	17,32,32	3.05	9 (52%)
3	4ZY	A	501	-	9,9,9	0.89	0	10,11,11	0.48	0

Mol	Type	Chain	Res	Link	Bond lengths			Bond angles		
					Counts	RMSZ	# Z  > 2	Counts	RMSZ	# Z  > 2
2	MTA	B	401	-	17,22,22	1.13	1 (5%)	17,32,32	2.39	4 (23%)
3	4ZY	B	501	-	9,9,9	1.08	0	10,11,11	0.72	0
4	GOL	B	503	-	5,5,5	0.23	0	5,5,5	0.63	0
5	1PG	B	702	-	16,16,16	0.66	0	15,15,15	0.56	0
2	MTA	C	401	-	17,22,22	1.31	1 (5%)	17,32,32	2.39	4 (23%)
3	4ZY	C	501	-	9,9,9	0.95	0	10,11,11	1.05	0
4	GOL	C	502	-	5,5,5	0.57	0	5,5,5	0.32	0

In the following table, the Chirals column lists the number of chiral outliers, the number of chiral centers analysed, the number of these observed in the model and the number defined in the chemical component dictionary. Similar counts are reported in the Torsion and Rings columns. '-' means no outliers of that kind were identified.

Mol	Type	Chain	Res	Link	Chirals	Torsions	Rings
2	MTA	A	401	-	-	0/3/23/23	0/3/3/3
3	4ZY	A	501	-	-	0/2/2/2	0/1/1/1
2	MTA	B	401	-	-	0/3/23/23	0/3/3/3
3	4ZY	B	501	-	-	0/2/2/2	0/1/1/1
4	GOL	B	503	-	-	0/4/4/4	0/0/0/0
5	1PG	B	702	-	-	0/14/14/14	0/0/0/0
2	MTA	C	401	-	-	0/3/23/23	0/3/3/3
3	4ZY	C	501	-	-	0/2/2/2	0/1/1/1
4	GOL	C	502	-	-	0/4/4/4	0/0/0/0

All (3) bond length outliers are listed below:

Mol	Chain	Res	Type	Atoms	Z	Observed(Å)	Ideal(Å)
2	C	401	MTA	C5'-S5'	-4.15	1.76	1.80
2	A	401	MTA	C5-C4	2.71	1.46	1.40
2	B	401	MTA	C5-C4	3.22	1.47	1.40

All (17) bond angle outliers are listed below:

Mol	Chain	Res	Type	Atoms	Z	Observed(°)	Ideal(°)
2	A	401	MTA	N3-C2-N1	-8.96	122.04	128.89
2	B	401	MTA	N3-C2-N1	-7.31	123.30	128.89
2	C	401	MTA	N3-C2-N1	-7.28	123.32	128.89
2	B	401	MTA	C4'-O4'-C1'	-3.96	105.37	109.72
2	C	401	MTA	C4'-O4'-C1'	-3.63	105.73	109.72
2	A	401	MTA	O4'-C4'-C3'	-3.50	98.09	105.15
2	A	401	MTA	C1'-N9-C4	-3.32	121.94	126.94
2	A	401	MTA	CS-S5'-C5'	-3.28	95.88	101.21

*Continued on next page...*

*Continued from previous page...*

Mol	Chain	Res	Type	Atoms	Z	Observed(°)	Ideal(°)
2	C	401	MTA	C4-C5-N7	-2.60	107.08	109.48
2	A	401	MTA	C4-C5-N7	-2.52	107.16	109.48
2	B	401	MTA	C1'-N9-C4	-2.09	123.79	126.94
2	A	401	MTA	O4'-C1'-N9	2.00	112.29	108.10
2	A	401	MTA	N6-C6-N1	2.07	123.64	119.20
2	A	401	MTA	C2'-C3'-C4'	2.15	107.02	102.61
2	C	401	MTA	C2-N1-C6	2.51	123.25	118.77
2	B	401	MTA	N6-C6-N1	2.88	125.38	119.20
2	A	401	MTA	C2-N1-C6	3.48	124.99	118.77

There are no chirality outliers.

There are no torsion outliers.

There are no ring outliers.

1 monomer is involved in 2 short contacts:

Mol	Chain	Res	Type	Clashes	Symm-Clashes
5	B	702	1PG	2	0

## 5.7 Other polymers [i](#)

There are no such residues in this entry.

## 5.8 Polymer linkage issues [i](#)

There are no chain breaks in this entry.

## 6 Fit of model and data ⓘ

### 6.1 Protein, DNA and RNA chains ⓘ

In the following table, the column labelled ‘#RSRZ> 2’ contains the number (and percentage) of RSRZ outliers, followed by percent RSRZ outliers for the chain as percentile scores relative to all X-ray entries and entries of similar resolution. The OWAB column contains the minimum, median, 95<sup>th</sup> percentile and maximum values of the occupancy-weighted average B-factor per residue. The column labelled ‘Q< 0.9’ lists the number of (and percentage) of residues with an average occupancy less than 0.9.

Mol	Chain	Analysed	<RSRZ>	#RSRZ>2	OWAB(Å <sup>2</sup> )	Q<0.9
1	A	281/281 (100%)	0.16	18 (6%) 23 26	20, 31, 50, 62	0
1	B	279/281 (99%)	-0.12	6 (2%) 65 71	16, 25, 45, 67	0
1	C	281/281 (100%)	-0.25	8 (2%) 56 63	14, 22, 39, 55	0
All	All	841/843 (99%)	-0.07	32 (3%) 44 50	14, 26, 46, 67	0

All (32) RSRZ outliers are listed below:

Mol	Chain	Res	Type	RSRZ
1	A	227	VAL	4.0
1	A	194	ILE	3.7
1	A	195	VAL	3.4
1	C	195	VAL	3.3
1	B	195	VAL	3.3
1	C	227	VAL	3.2
1	B	194	ILE	3.1
1	A	122	VAL	3.0
1	B	227	VAL	2.9
1	A	271	ILE	2.9
1	B	278	ASP	2.9
1	A	123	VAL	2.9
1	A	102	TYR	2.7
1	A	279	THR	2.7
1	A	41	LYS	2.7
1	A	228	ALA	2.7
1	C	194	ILE	2.7
1	C	228	ALA	2.6
1	A	301	TYR	2.6
1	A	106	MET	2.6
1	A	121	LEU	2.5
1	C	185	ASN	2.4
1	C	193	ILE	2.4

*Continued on next page...*



*Continued from previous page...*

Mol	Chain	Res	Type	RSRZ
1	A	278	ASP	2.3
1	A	252	LYS	2.3
1	B	228	ALA	2.2
1	C	106	MET	2.2
1	C	226	CYS	2.1
1	B	193	ILE	2.1
1	A	289	GLU	2.1
1	A	226	CYS	2.1
1	A	193	ILE	2.0

## 6.2 Non-standard residues in protein, DNA, RNA chains [i](#)

There are no non-standard protein/DNA/RNA residues in this entry.

## 6.3 Carbohydrates [i](#)

There are no carbohydrates in this entry.

## 6.4 Ligands [i](#)

In the following table, the Atoms column lists the number of modelled atoms in the group and the number defined in the chemical component dictionary. LLDF column lists the quality of electron density of the group with respect to its neighbouring residues in protein, DNA or RNA chains. The B-factors column lists the minimum, median, 95<sup>th</sup> percentile and maximum values of B factors of atoms in the group. The column labelled 'Q< 0.9' lists the number of atoms with occupancy less than 0.9.

Mol	Type	Chain	Res	Atoms	RSCC	RSR	LLDF	B-factors(Å <sup>2</sup> )	Q<0.9
5	1PG	B	702	17/17	0.77	0.30	2.86	42,59,89,94	0
3	4ZY	C	501	9/9	0.96	0.18	0.89	17,18,20,20	0
3	4ZY	B	501	9/9	0.96	0.18	0.81	19,21,22,24	0
3	4ZY	A	501	9/9	0.90	0.18	0.64	28,34,36,38	0
2	MTA	C	401	20/20	0.95	0.11	0.12	18,22,24,24	0
2	MTA	A	401	20/20	0.96	0.10	-0.40	19,20,24,27	0
2	MTA	B	401	20/20	0.97	0.09	-0.54	18,21,24,25	0
4	GOL	C	502	6/6	0.85	0.13	-	31,36,40,45	0
4	GOL	B	503	6/6	0.92	0.12	-	28,37,41,45	0

## 6.5 Other polymers

There are no such residues in this entry.