



Full wwPDB X-ray Structure Validation Report ⓘ

Feb 1, 2016 – 06:39 AM GMT

PDB ID : 2XUH
Title : CRYSTAL STRUCTURE OF MACHE-Y337A-TZ2PA6 ANTI COMPLEX
(10 MTH)
Authors : Bourne, Y.; Radic, Z.; Taylor, P.; Marchot, P.
Deposited on : 2010-10-19
Resolution : 2.65 Å(reported)

This is a Full wwPDB X-ray Structure Validation Report for a publicly released PDB entry.
We welcome your comments at validation@mail.wwpdb.org
A user guide is available at
<http://wwpdb.org/validation/2016/XrayValidationReportHelp>
with specific help available everywhere you see the ⓘ symbol.

The following versions of software and data (see [references ⓘ](#)) were used in the production of this report:

MolProbity : 4.02b-467
Mogul : 1.7 (RC4), CSD as536be (2015)
Xtriage (Phenix) : 1.9-1692
EDS : rb-20026688
Percentile statistics : 20151230.v01 (using entries in the PDB archive December 30th 2015)
Refmac : 5.8.0135
CCP4 : 6.5.0
Ideal geometry (proteins) : Engh & Huber (2001)
Ideal geometry (DNA, RNA) : Parkinson et al. (1996)
Validation Pipeline (wwPDB-VP) : trunk26865

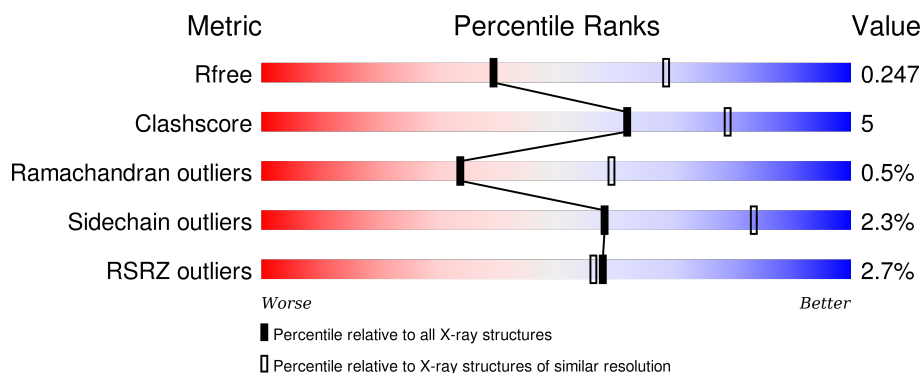
1 Overall quality at a glance ⓘ

The following experimental techniques were used to determine the structure:

X-RAY DIFFRACTION

The reported resolution of this entry is 2.65 Å.

Percentile scores (ranging between 0-100) for global validation metrics of the entry are shown in the following graphic. The table shows the number of entries on which the scores are based.



Metric	Whole archive (#Entries)	Similar resolution (#Entries, resolution range(Å))
R_{free}	91344	3152 (2.70-2.62)
Clashscore	102246	3524 (2.70-2.62)
Ramachandran outliers	100387	3469 (2.70-2.62)
Sidechain outliers	100360	3469 (2.70-2.62)
RSRZ outliers	91569	3161 (2.70-2.62)

The table below summarises the geometric issues observed across the polymeric chains and their fit to the electron density. The red, orange, yellow and green segments on the lower bar indicate the fraction of residues that contain outliers for ≥ 3 , 2, 1 and 0 types of geometric quality criteria. A grey segment represents the fraction of residues that are not modelled. The numeric value for each fraction is indicated below the corresponding segment, with a dot representing fractions $\leq 5\%$. The upper red bar (where present) indicates the fraction of residues that have poor fit to the electron density. The numeric value is given above the bar.

Mol	Chain	Length	Quality of chain
1	A	543	<div> <div>3%</div> <div>83%</div> <div>14%</div> <div>..</div> </div>
1	B	543	<div> <div>3%</div> <div>88%</div> <div>9%</div> <div>..</div> </div>

2 Entry composition [i](#)

There are 3 unique types of molecules in this entry. The entry contains 8529 atoms, of which 0 are hydrogens and 0 are deuteriums.

In the tables below, the ZeroOcc column contains the number of atoms modelled with zero occupancy, the AltConf column contains the number of residues with at least one atom in alternate conformation and the Trace column contains the number of residues modelled with at most 2 atoms.

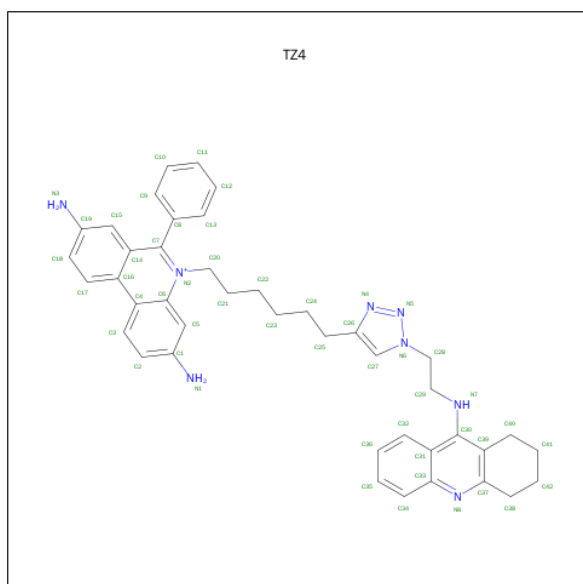
- Molecule 1 is a protein called ACETYLCHOLINESTERASE.

Mol	Chain	Residues	Atoms					ZeroOcc	AltConf	Trace
1	A	537	Total	C	N	O	S	0	3	0
			4197	2692	732	759	14			
1	B	533	Total	C	N	O	S	0	2	0
			4160	2672	722	752	14			

There are 2 discrepancies between the modelled and reference sequences:

Chain	Residue	Modelled	Actual	Comment	Reference
A	337	ALA	TYR	ENGINEERED MUTATION	UNP P21836
B	337	ALA	TYR	ENGINEERED MUTATION	UNP P21836

- Molecule 2 is 3,8-DIAMINO-6-PHENYL-5-[6-[1-[2-[(1,2,3,4-TETRAHYDRO-9-ACRIDINYL)AMINO]ETHYL]-1H-1,2,3-TRIAZOL-4-YL]HEXYL]-PHENANTHRIDINIUM (three-letter code: TZ4) (formula: C₄₂H₄₅N₈).



Mol	Chain	Residues	Atoms			ZeroOcc	AltConf
2	A	1	Total	C	N	0	0
			50	42	8		
2	B	1	Total	C	N	0	0
			50	42	8		

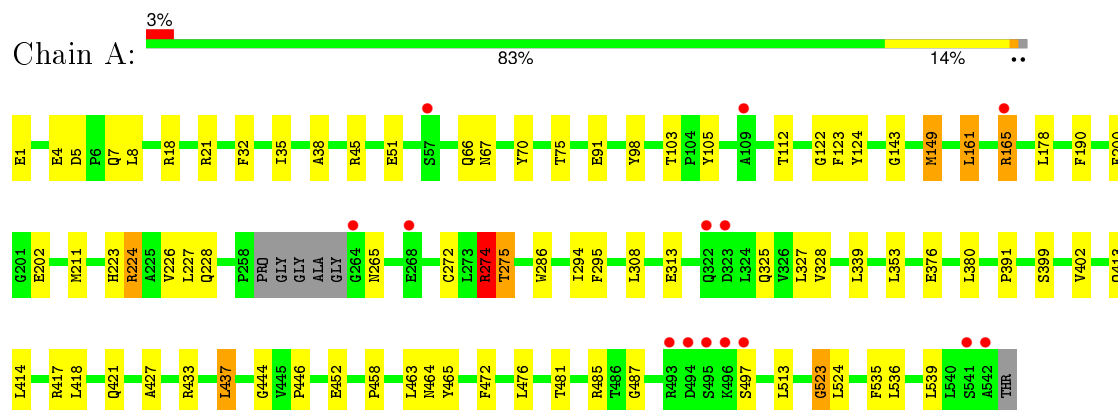
- Molecule 3 is water.

Mol	Chain	Residues	Atoms		ZeroOcc	AltConf
3	A	47	Total	O	0	0
			47	47		
3	B	25	Total	O	0	0
			25	25		

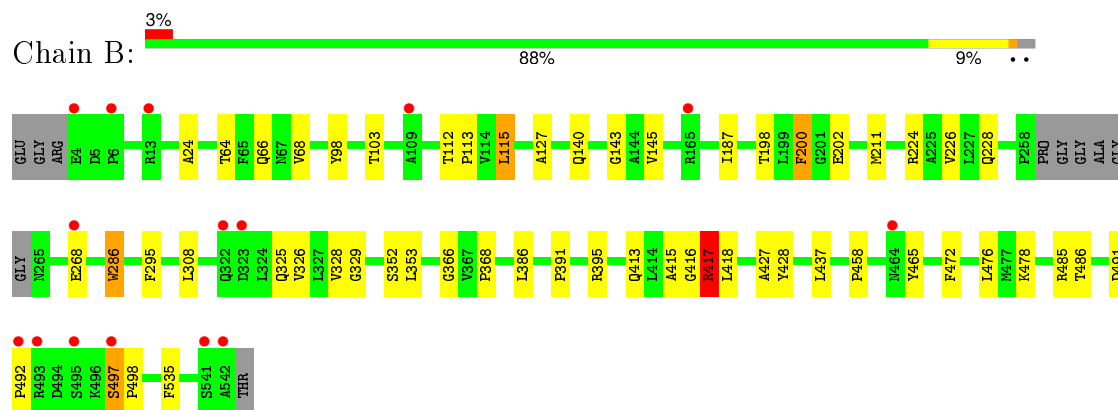
3 Residue-property plots

These plots are drawn for all protein, RNA and DNA chains in the entry. The first graphic for a chain summarises the proportions of errors displayed in the second graphic. The second graphic shows the sequence view annotated by issues in geometry and electron density. Residues are color-coded according to the number of geometric quality criteria for which they contain at least one outlier: green = 0, yellow = 1, orange = 2 and red = 3 or more. A red dot above a residue indicates a poor fit to the electron density ($RSRZ > 2$). Stretches of 2 or more consecutive residues without any outlier are shown as a green connector. Residues present in the sample, but not in the model, are shown in grey.

• Molecule 1: ACETYLCHOLINESTERASE



• Molecule 1: ACETYLCHOLINESTERASE



4 Data and refinement statistics

Property	Value	Source
Space group	P 21 21 21	Depositor
Cell constants a, b, c, α , β , γ	79.04Å 110.62Å 227.04Å 90.00° 90.00° 90.00°	Depositor
Resolution (Å)	20.00 – 2.65 19.97 – 2.65	Depositor EDS
% Data completeness (in resolution range)	99.6 (20.00-2.65) 99.6 (19.97-2.65)	Depositor EDS
R_{merge}	0.06	Depositor
R_{sym}	(Not available)	Depositor
$\langle I/\sigma(I) \rangle$ ¹	4.13 (at 2.67Å)	Xtriage
Refinement program	REFMAC 5.5.0109	Depositor
R, R_{free}	0.197 , 0.245 0.201 , 0.247	Depositor DCC
R_{free} test set	1197 reflections (2.10%)	DCC
Wilson B-factor (Å ²)	61.0	Xtriage
Anisotropy	0.094	Xtriage
Bulk solvent k_{sol} (e/Å ³), B_{sol} (Å ²)	0.32 , 37.2	EDS
Estimated twinning fraction	No twinning to report.	Xtriage
L-test for twinning ²	$\langle L \rangle = 0.51$, $\langle L^2 \rangle = 0.34$	Xtriage
Outliers	1 of 58296 reflections (0.002%)	Xtriage
F_o, F_c correlation	0.95	EDS
Total number of atoms	8529	wwPDB-VP
Average B, all atoms (Å ²)	56.0	wwPDB-VP

Xtriage's analysis on translational NCS is as follows: *The largest off-origin peak in the Patterson function is 2.65% of the height of the origin peak. No significant pseudotranslation is detected.*

¹Intensities estimated from amplitudes.

²Theoretical values of $\langle |L| \rangle$, $\langle L^2 \rangle$ for acentric reflections are 0.5, 0.375 respectively for untwinned datasets, and 0.333, 0.2 for perfectly twinned datasets.

5 Model quality

5.1 Standard geometry

Bond lengths and bond angles in the following residue types are not validated in this section: TZ4

The Z score for a bond length (or angle) is the number of standard deviations the observed value is removed from the expected value. A bond length (or angle) with $|Z| > 5$ is considered an outlier worth inspection. RMSZ is the root-mean-square of all Z scores of the bond lengths (or angles).

Mol	Chain	Bond lengths		Bond angles	
		RMSZ	$\# Z > 5$	RMSZ	$\# Z > 5$
1	A	0.67	2/4330 (0.0%)	0.76	5/5916 (0.1%)
1	B	0.64	1/4290 (0.0%)	0.71	1/5866 (0.0%)
All	All	0.66	3/8620 (0.0%)	0.73	6/11782 (0.1%)

Chiral center outliers are detected by calculating the chiral volume of a chiral center and verifying if the center is modelled as a planar moiety or with the opposite hand. A planarity outlier is detected by checking planarity of atoms in a peptide group, atoms in a mainchain group or atoms of a sidechain that are expected to be planar.

Mol	Chain	#Chirality outliers	#Planarity outliers
1	A	0	2
1	B	0	1
All	All	0	3

All (3) bond length outliers are listed below:

Mol	Chain	Res	Type	Atoms	Z	Observed(Å)	Ideal(Å)
1	A	452	GLU	CB-CG	-5.72	1.41	1.52
1	A	313	GLU	CG-CD	5.10	1.59	1.51
1	B	268	GLU	CG-CD	5.08	1.59	1.51

All (6) bond angle outliers are listed below:

Mol	Chain	Res	Type	Atoms	Z	Observed(°)	Ideal(°)
1	A	224	ARG	N-CA-C	6.79	129.34	111.00
1	B	115	LEU	CA-CB-CG	6.41	130.04	115.30
1	A	437	LEU	CA-CB-CG	5.70	128.41	115.30
1	A	274	ARG	N-CA-C	5.62	126.19	111.00
1	A	274	ARG	C-N-CA	5.49	135.42	121.70
1	A	161	LEU	CA-CB-CG	-5.00	103.79	115.30

There are no chirality outliers.

All (3) planarity outliers are listed below:

Mol	Chain	Res	Type	Group
1	A	223	HIS	Peptide
1	A	274	ARG	Peptide
1	B	415	ALA	Peptide

5.2 Too-close contacts

In the following table, the Non-H and H(model) columns list the number of non-hydrogen atoms and hydrogen atoms in the chain respectively. The H(added) column lists the number of hydrogen atoms added and optimized by MolProbity. The Clashes column lists the number of clashes within the asymmetric unit, whereas Symm-Clashes lists symmetry related clashes.

Mol	Chain	Non-H	H(model)	H(added)	Clashes	Symm-Clashes
1	A	4197	0	4090	50	0
1	B	4160	0	4046	40	0
2	A	50	0	45	3	0
2	B	50	0	45	2	0
3	A	47	0	0	0	0
3	B	25	0	0	0	0
All	All	8529	0	8226	90	0

The all-atom clashscore is defined as the number of clashes found per 1000 atoms (including hydrogen atoms). The all-atom clashscore for this structure is 5.

All (90) close contacts within the same asymmetric unit are listed below, sorted by their clash magnitude.

Atom-1	Atom-2	Interatomic distance (Å)	Clash overlap (Å)
1:B:416:GLY:HA3	1:B:417:ARG:HB2	1.21	1.13
1:B:497:SER:HB3	1:B:498:PRO:HA	1.12	1.06
1:B:416:GLY:HA3	1:B:417:ARG:CB	1.89	1.03
1:B:497:SER:HB3	1:B:498:PRO:CA	1.93	0.99
1:B:416:GLY:CA	1:B:417:ARG:HB2	2.01	0.90
1:B:497:SER:CB	1:B:498:PRO:HA	2.03	0.82
1:A:4:GLU:OE2	1:A:18:ARG:HD3	1.79	0.82
2:A:1543:TZ4:H402	2:A:1543:TZ4:H292	1.72	0.72
1:A:380:LEU:HD12	1:B:535:PHE:HB2	1.70	0.72
1:A:224:ARG:HG2	1:A:325:GLN:HB2	1.73	0.70
1:A:66:GLN:HG3	1:A:67:ASN:H	1.56	0.68
1:A:413:GLN:O	1:A:414:LEU:C	2.32	0.68

Continued on next page...

Continued from previous page...

Atom-1	Atom-2	Interatomic distance (Å)	Clash overlap (Å)
1:A:272:CYS:O	1:A:275:THR:HB	1.95	0.65
1:A:353:LEU:HB3	1:A:391:PRO:HB2	1.78	0.65
1:B:211:MET:HG2	1:B:308:LEU:HD21	1.80	0.62
1:A:325:GLN:NE2	1:A:487:GLY:HA3	2.16	0.61
1:A:45:ARG:NH1	1:A:51:GLU:OE1	2.34	0.61
1:A:66:GLN:HG2	1:A:98:TYR:CD2	2.37	0.59
1:A:149:MET:HG2	1:A:149:MET:O	2.02	0.59
1:B:66:GLN:HG2	1:B:98:TYR:CG	2.38	0.58
1:A:66:GLN:HG3	1:A:67:ASN:N	2.18	0.58
1:B:224:ARG:HG2	1:B:325:GLN:HB2	1.86	0.58
1:B:326:VAL:HG21	1:B:418:LEU:HD13	1.86	0.57
1:A:66:GLN:HG2	1:A:98:TYR:CG	2.41	0.56
1:A:294:ILE:HD11	1:A:402:VAL:HG21	1.86	0.56
1:B:112:THR:HG21	1:B:143:GLY:O	2.08	0.53
1:B:328:VAL:O	1:B:427:ALA:HA	2.09	0.53
1:A:45:ARG:HH11	1:A:51:GLU:HB3	1.73	0.52
1:A:417:ARG:HH21	1:A:421:GLN:NE2	2.08	0.52
1:B:497:SER:CB	1:B:498:PRO:CA	2.73	0.52
1:A:124:TYR:OH	2:A:1543:TZ4:H241	2.10	0.52
1:B:458:PRO:HA	1:B:465:TYR:CD2	2.45	0.52
1:B:200:PHE:CB	1:B:226:VAL:HB	2.40	0.52
1:B:416:GLY:CA	1:B:417:ARG:CB	2.72	0.51
1:A:472:PHE:CZ	1:A:476:LEU:HD11	2.46	0.51
1:A:376:GLU:O	1:A:380:LEU:HG	2.12	0.50
1:B:66:GLN:HG2	1:B:98:TYR:CD2	2.46	0.50
1:A:21[A]:ARG:HD2	1:A:105:TYR:CZ	2.46	0.50
1:A:458:PRO:HA	1:A:465:TYR:CD2	2.47	0.49
1:A:226:VAL:HG22	1:A:327:LEU:HB3	1.94	0.48
1:A:414:LEU:HG	1:A:418:LEU:HD11	1.96	0.48
1:B:413:GLN:O	1:B:416:GLY:HA3	2.13	0.48
1:A:433:ARG:HG3	1:A:437:LEU:HD23	1.95	0.48
1:A:122:GLY:O	1:A:123:PHE:HB2	2.14	0.48
1:B:353:LEU:HB3	1:B:391:PRO:HB2	1.95	0.48
2:A:1543:TZ4:C40	2:A:1543:TZ4:H292	2.43	0.47
1:B:413:GLN:O	1:B:417:ARG:HB2	2.15	0.47
2:B:1543:TZ4:H292	2:B:1543:TZ4:H402	1.98	0.46
1:A:476:LEU:CD2	1:A:513:LEU:HD13	2.46	0.46
1:B:24:ALA:HB3	1:B:140:GLN:HG3	1.97	0.46
1:A:112:THR:HG21	1:A:143:GLY:O	2.16	0.46
1:B:202:GLU:HA	1:B:228:GLN:O	2.15	0.46
1:B:68:VAL:HG22	1:B:127:ALA:CB	2.46	0.46

Continued on next page...

Continued from previous page...

Atom-1	Atom-2	Interatomic distance (Å)	Clash overlap (Å)
1:A:211:MET:HG2	1:A:308:LEU:HD21	1.98	0.46
1:A:5:ASP:HB3	1:A:8:LEU:HD12	1.97	0.46
1:A:328:VAL:O	1:A:427:ALA:HA	2.17	0.46
1:A:45:ARG:HH12	1:A:51:GLU:CD	2.18	0.45
1:B:68:VAL:HG22	1:B:127:ALA:HB1	1.98	0.45
1:A:45:ARG:NH1	1:A:51:GLU:CD	2.70	0.45
1:B:115:LEU:HD12	1:B:198:THR:HB	1.98	0.45
1:A:272:CYS:C	1:A:274:ARG:H	2.20	0.44
1:A:463:LEU:O	1:A:464:ASN:HB2	2.16	0.44
1:B:485:ARG:HB3	1:B:486:THR:HG23	1.99	0.44
1:A:165:ARG:HG3	1:A:165:ARG:HH11	1.83	0.43
1:B:472:PHE:CZ	1:B:476:LEU:HD11	2.53	0.43
1:B:187:ILE:HA	1:B:187:ILE:HD12	1.87	0.43
1:A:67:ASN:OD1	1:A:91:GLU:HG2	2.19	0.42
1:A:32:PHE:HB3	1:A:35:ILE:HD11	2.01	0.42
1:A:38:ALA:HB2	1:A:178:LEU:HD23	1.99	0.42
1:B:113:PRO:HG2	1:B:485:ARG:HG3	2.01	0.42
1:A:523:GLY:HA3	1:B:386:LEU:HD21	2.01	0.42
1:A:444:GLY:O	1:A:446:PRO:HD3	2.19	0.42
1:A:227:LEU:N	1:A:227:LEU:HD12	2.34	0.42
1:B:103:THR:HG22	1:B:145:VAL:HG22	2.01	0.42
1:A:202:GLU:HA	1:A:228:GLN:O	2.19	0.42
1:B:200:PHE:HB2	1:B:226:VAL:HB	2.01	0.42
1:B:491:ASP:HA	1:B:492:PRO:HD3	1.90	0.42
1:B:329:GLY:HA3	1:B:428:TYR:CZ	2.55	0.41
1:A:149:MET:CG	1:A:149:MET:O	2.67	0.41
1:A:339:LEU:HD11	1:A:399:SER:HA	2.02	0.41
1:A:481:THR:O	1:A:485:ARG:HB2	2.20	0.41
1:B:417:ARG:HD3	1:B:417:ARG:HA	1.32	0.41
1:B:366:GLY:C	1:B:368:PRO:HD3	2.41	0.41
1:A:380:LEU:CD1	1:B:535:PHE:HB2	2.44	0.41
1:B:286:TRP:CZ2	2:B:1543:TZ4:H211	2.56	0.41
1:A:103:THR:HG21	1:A:190:PHE:HB3	2.02	0.41
1:A:535:PHE:CE2	1:A:539:LEU:HD22	2.56	0.41
1:A:7:GLN:O	1:A:7:GLN:HG3	2.20	0.40
1:A:4:GLU:OE2	1:A:18:ARG:CD	2.61	0.40
1:B:352:SER:O	1:B:395:ARG:HG3	2.21	0.40

There are no symmetry-related clashes.

5.3 Torsion angles

5.3.1 Protein backbone

In the following table, the Percentiles column shows the percent Ramachandran outliers of the chain as a percentile score with respect to all X-ray entries followed by that with respect to entries of similar resolution.

The Analysed column shows the number of residues for which the backbone conformation was analysed, and the total number of residues.

Mol	Chain	Analysed	Favoured	Allowed	Outliers	Percentiles	
1	A	536/543 (99%)	509 (95%)	24 (4%)	3 (1%)	30	54
1	B	531/543 (98%)	510 (96%)	19 (4%)	2 (0%)	39	65
All	All	1067/1086 (98%)	1019 (96%)	43 (4%)	5 (0%)	34	59

All (5) Ramachandran outliers are listed below:

Mol	Chain	Res	Type
1	A	265	ASN
1	B	417	ARG
1	B	497	SER
1	A	275	THR
1	A	523	GLY

5.3.2 Protein sidechains

In the following table, the Percentiles column shows the percent sidechain outliers of the chain as a percentile score with respect to all X-ray entries followed by that with respect to entries of similar resolution.

The Analysed column shows the number of residues for which the sidechain conformation was analysed, and the total number of residues.

Mol	Chain	Analysed	Rotameric	Outliers	Percentiles	
1	A	440/442 (100%)	427 (97%)	13 (3%)	48	77
1	B	436/442 (99%)	429 (98%)	7 (2%)	70	89
All	All	876/884 (99%)	856 (98%)	20 (2%)	58	83

All (20) residues with a non-rotameric sidechain are listed below:

Mol	Chain	Res	Type
1	A	1	GLU

Continued on next page...

Continued from previous page...

Mol	Chain	Res	Type
1	A	70	TYR
1	A	75	THR
1	A	149	MET
1	A	161	LEU
1	A	165	ARG
1	A	200	PHE
1	A	274	ARG
1	A	286	TRP
1	A	295	PHE
1	A	497	SER
1	A	524	LEU
1	A	536	LEU
1	B	64	THR
1	B	200	PHE
1	B	286	TRP
1	B	295	PHE
1	B	417	ARG
1	B	437	LEU
1	B	478	LYS

Some sidechains can be flipped to improve hydrogen bonding and reduce clashes. All (4) such sidechains are listed below:

Mol	Chain	Res	Type
1	A	322	GLN
1	A	325	GLN
1	A	421	GLN
1	B	287	HIS

5.3.3 RNA ⓘ

There are no RNA molecules in this entry.

5.4 Non-standard residues in protein, DNA, RNA chains ⓘ

There are no non-standard protein/DNA/RNA residues in this entry.

5.5 Carbohydrates ⓘ

There are no carbohydrates in this entry.

5.6 Ligand geometry ⓘ

2 ligands are modelled in this entry.

In the following table, the Counts columns list the number of bonds (or angles) for which Mogul statistics could be retrieved, the number of bonds (or angles) that are observed in the model and the number of bonds (or angles) that are defined in the chemical component dictionary. The Link column lists molecule types, if any, to which the group is linked. The Z score for a bond length (or angle) is the number of standard deviations the observed value is removed from the expected value. A bond length (or angle) with $|Z| > 2$ is considered an outlier worth inspection. RMSZ is the root-mean-square of all Z scores of the bond lengths (or angles).

Mol	Type	Chain	Res	Link	Bond lengths			Bond angles		
					Counts	RMSZ	# $ Z > 2$	Counts	RMSZ	# $ Z > 2$
2	TZ4	A	1543	-	55,57,57	1.65	12 (21%)	69,80,80	2.33	13 (18%)
2	TZ4	B	1543	-	55,57,57	1.68	10 (18%)	69,80,80	2.28	13 (18%)

In the following table, the Chirals column lists the number of chiral outliers, the number of chiral centers analysed, the number of these observed in the model and the number defined in the chemical component dictionary. Similar counts are reported in the Torsion and Rings columns. '-' means no outliers of that kind were identified.

Mol	Type	Chain	Res	Link	Chirals	Torsions	Rings
2	TZ4	A	1543	-	-	0/19/26/26	0/8/8/8
2	TZ4	B	1543	-	-	0/19/26/26	0/8/8/8

All (22) bond length outliers are listed below:

Mol	Chain	Res	Type	Atoms	Z	Observed(Å)	Ideal(Å)
2	B	1543	TZ4	C38-C37	-4.46	1.43	1.50
2	A	1543	TZ4	C40-C39	-4.38	1.44	1.51
2	B	1543	TZ4	C40-C39	-4.00	1.45	1.51
2	B	1543	TZ4	C42-C38	-3.72	1.37	1.51
2	B	1543	TZ4	C41-C40	-3.63	1.38	1.51
2	A	1543	TZ4	C38-C37	-3.48	1.45	1.50
2	A	1543	TZ4	C42-C38	-3.32	1.39	1.51
2	A	1543	TZ4	C41-C40	-3.29	1.39	1.51
2	A	1543	TZ4	C6-N2	2.02	1.43	1.40
2	A	1543	TZ4	C39-C37	2.02	1.43	1.40
2	B	1543	TZ4	C8-C7	2.09	1.51	1.48
2	A	1543	TZ4	C17-C16	2.10	1.45	1.41
2	B	1543	TZ4	C34-C33	2.25	1.46	1.41
2	A	1543	TZ4	C36-C35	2.26	1.43	1.38
2	B	1543	TZ4	C36-C35	2.31	1.44	1.38
2	A	1543	TZ4	C27-C26	2.35	1.39	1.36

Continued on next page...

Continued from previous page...

Mol	Chain	Res	Type	Atoms	Z	Observed(Å)	Ideal(Å)
2	B	1543	TZ4	C39-C37	2.36	1.43	1.40
2	A	1543	TZ4	C15-C14	2.37	1.46	1.42
2	A	1543	TZ4	C34-C33	2.40	1.46	1.41
2	B	1543	TZ4	C37-N8	2.74	1.35	1.32
2	B	1543	TZ4	C27-C26	3.04	1.40	1.36
2	A	1543	TZ4	C37-N8	3.95	1.37	1.32

All (26) bond angle outliers are listed below:

Mol	Chain	Res	Type	Atoms	Z	Observed(°)	Ideal(°)
2	A	1543	TZ4	C40-C39-C37	-5.46	116.92	121.05
2	B	1543	TZ4	C40-C39-C37	-5.35	117.00	121.05
2	B	1543	TZ4	C39-C30-C31	-4.32	117.29	120.38
2	A	1543	TZ4	C39-C30-C31	-3.44	117.92	120.38
2	B	1543	TZ4	C8-C7-C14	-2.73	115.58	122.53
2	B	1543	TZ4	C26-C27-N6	-2.61	102.86	107.12
2	A	1543	TZ4	C26-C27-N6	-2.35	103.29	107.12
2	A	1543	TZ4	C8-C7-C14	-2.26	116.76	122.53
2	A	1543	TZ4	C9-C8-C7	-2.23	116.41	120.19
2	B	1543	TZ4	C32-C31-C33	-2.20	116.08	118.33
2	B	1543	TZ4	C38-C37-C39	-2.11	119.48	121.69
2	B	1543	TZ4	C5-C6-C4	-2.03	117.64	120.69
2	A	1543	TZ4	C38-C37-C39	-2.01	119.59	121.69
2	A	1543	TZ4	C16-C4-C6	2.10	121.52	119.12
2	A	1543	TZ4	C13-C8-C9	2.19	121.70	117.55
2	B	1543	TZ4	C39-C30-N7	2.77	125.24	119.56
2	A	1543	TZ4	C39-C30-N7	3.22	126.17	119.56
2	B	1543	TZ4	C41-C40-C39	3.74	120.67	113.02
2	B	1543	TZ4	C8-C7-N2	3.77	124.98	120.46
2	B	1543	TZ4	C42-C38-C37	3.81	119.90	113.48
2	A	1543	TZ4	C41-C40-C39	4.41	122.03	113.02
2	A	1543	TZ4	N4-N5-N6	5.00	111.08	107.31
2	A	1543	TZ4	C42-C38-C37	5.16	122.17	113.48
2	B	1543	TZ4	N4-N5-N6	6.15	111.95	107.31
2	B	1543	TZ4	C21-C20-N2	12.41	122.77	112.29
2	A	1543	TZ4	C21-C20-N2	12.95	123.22	112.29

There are no chirality outliers.

There are no torsion outliers.

There are no ring outliers.

2 monomers are involved in 5 short contacts:

Mol	Chain	Res	Type	Clashes	Symm-Clashes
2	A	1543	TZ4	3	0
2	B	1543	TZ4	2	0

5.7 Other polymers [i](#)

There are no such residues in this entry.

5.8 Polymer linkage issues [i](#)

There are no chain breaks in this entry.

6 Fit of model and data

6.1 Protein, DNA and RNA chains

In the following table, the column labelled ‘#RSRZ> 2’ contains the number (and percentage) of RSRZ outliers, followed by percent RSRZ outliers for the chain as percentile scores relative to all X-ray entries and entries of similar resolution. The OWAB column contains the minimum, median, 95th percentile and maximum values of the occupancy-weighted average B-factor per residue. The column labelled ‘Q< 0.9’ lists the number of (and percentage) of residues with an average occupancy less than 0.9.

Mol	Chain	Analysed	<RSRZ>	#RSRZ>2	OWAB(Å ²)	Q<0.9
1	A	537/543 (98%)	-0.33	14 (2%) 59 58	36, 51, 74, 109	0
1	B	533/543 (98%)	-0.29	15 (2%) 56 55	39, 58, 82, 102	0
All	All	1070/1086 (98%)	-0.31	29 (2%) 58 56	36, 54, 80, 109	0

All (29) RSRZ outliers are listed below:

Mol	Chain	Res	Type	RSRZ
1	A	264	GLY	4.9
1	A	493	ARG	4.7
1	A	495	SER	4.4
1	A	496	LYS	4.3
1	B	497	SER	3.7
1	A	494	ASP	3.6
1	A	497	SER	3.5
1	A	541	SER	3.3
1	B	495	SER	3.2
1	B	492	PRO	3.1
1	A	322	GLN	3.1
1	A	323	ASP	3.1
1	B	464	ASN	2.9
1	B	4	GLU	2.8
1	B	493	ARG	2.8
1	B	13	ARG	2.5
1	A	542	ALA	2.4
1	B	268	GLU	2.4
1	B	109	ALA	2.3
1	B	323	ASP	2.3
1	A	57	SER	2.2
1	B	6	PRO	2.2
1	A	268	GLU	2.2
1	B	165	ARG	2.1

Continued on next page...

Continued from previous page...

Mol	Chain	Res	Type	RSRZ
1	B	542	ALA	2.1
1	A	109	ALA	2.1
1	B	322	GLN	2.1
1	B	541	SER	2.0
1	A	165	ARG	2.0

6.2 Non-standard residues in protein, DNA, RNA chains [i](#)

There are no non-standard protein/DNA/RNA residues in this entry.

6.3 Carbohydrates [i](#)

There are no carbohydrates in this entry.

6.4 Ligands [i](#)

In the following table, the Atoms column lists the number of modelled atoms in the group and the number defined in the chemical component dictionary. LLDF column lists the quality of electron density of the group with respect to its neighbouring residues in protein, DNA or RNA chains. The B-factors column lists the minimum, median, 95th percentile and maximum values of B factors of atoms in the group. The column labelled 'Q < 0.9' lists the number of atoms with occupancy less than 0.9.

Mol	Type	Chain	Res	Atoms	RSCC	RSR	LLDF	B-factors(Å ²)	Q<0.9
2	TZ4	B	1543	50/50	0.90	0.18	1.72	45,61,80,83	0
2	TZ4	A	1543	50/50	0.92	0.18	1.11	37,51,74,78	0

6.5 Other polymers [i](#)

There are no such residues in this entry.